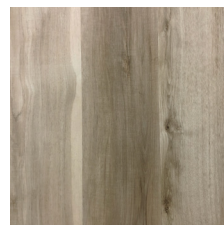


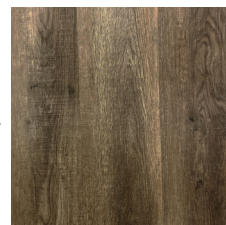
# XPR TIMBER

Extreme polymer rigid core waterproof

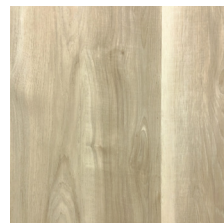
XPR + PAD



Arizona Valley



Carolina Falls



Hawaiian Sands



CRAFTED IN THE USA

 PARKAY FLOORS



SCAN >> INFO & LIVE

[www.parkayfloors.com](http://www.parkayfloors.com)

# XPR TIMBER

Extreme polymer rigid core waterproof

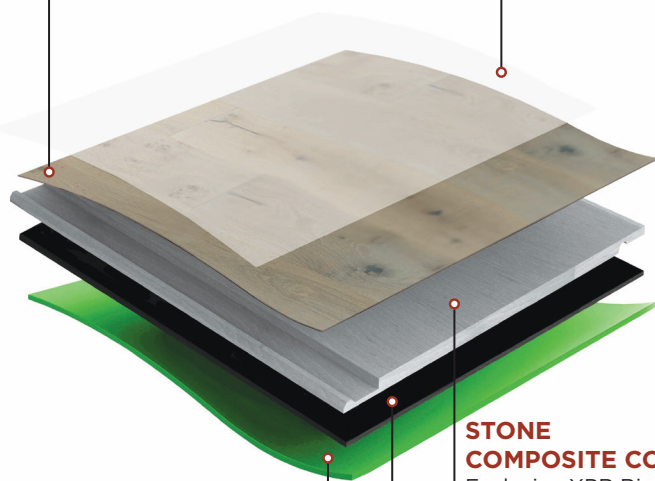
**XPR + PAD**

## DECORATIVE HD LAYER

Realistic designs impress in High Resolution, creating a unique natural style.

## PROTECTIVE WEAR LAYER (0.3mm/12MIL)

Prevents against excessive wear, tear resistance, and provides superior stain protection.



## IXPE PAD (1.0mm)

Provides sound reduction, feet comfort, and easier installation.

## STONE COMPOSITE CORE

Exclusive XPR Rigid Core. 100% Waterproof, prevents expansion and contraction, absorbs subfloor imperfections, glueless installation.

## BACKING LAYER

High vinyl content layer, provides robust foundation and impact resistance.

**XPR  
+  
PAD**



Made in USA



100% Waterproof



1mm Pad Attached



Phthalates Free No VOC



Two Plank Design



12 MIL (0.3mm) Wear Layer



Wood Grain



Super Anti-Scratch



Transition Molding



Angle Click



Micro-Bevel Edges



25 Years Warranty



Limited Warranty

# DATA SHEET TIMBER

	METHOD	PARAMETERS	NORM REQUIREMENTS	VALUES
Technical Data				
Total thickness	ISO24337:2006			5mm
Composite Rigid Core		100% Virgin PVC		4mm
Top layer	ISO24337:2006			0.3mm
Plank Width	ISO24337:2006			7.09"/180mm
Plank Length	ISO24337:2006			48.03"/1220mm
Units per Box				10
SF per Box				23.64
Locking System				Angle Click
Class	ISO10874:2009 EN16511:2014			33
Warranty		Residential (Structural)	See warranty for conditions	25 years
Warranty		Light Commercial(struct)	See warranty for conditions	7 Years
Wear Class	EN13329			12 Mil
Impact Resistance Big Ball	EN13329		Impact height: ≥1600mm(class33)	No visible damage
Scratch Resistance	ISO 1518-1:2011(E)		≥2500g	2700g
Staining	EN438-2:2016	Groups1,2	Grade5	Rating5: No change
		Groups3	Grade4	Rating4: Minor change
Light Fastness	ISO 105B02 2014	Blue Wool	Class 6	>Grade 6
Burning Cigarette		≤5s		No visible damage
Dimensional Variation	ISO24337:2006	Length	Inom≤1500mm: Δl≤0.5mm	Δl: 0.0mm
		Width	Δwavg≤0.10mm wmax-wmin≤0.20mm	Δwavg: 0.00mm wmax-wmin: 0.10mm
		Thickness	Δtavg≤0.50mm tmax-tmin≤0.50mm	Δtavg: 0.05mm tmax-tmin: 0.25mm
Emission of Formaldehyde	EN717-1		E1≤0.1mg/m³	≤0.003mg/m³
A-static	EN1815	Charge human body		≤2.0KV
Slip Resistance	DIN 51330:2014-02		X Direction (parallel to length direction)	R10
			Y Direction (parallel to width direction)	R10
Resistance to Heat	ASTM F1514-03(2013)			Average ΔE*ab: 0.26 (see Note 2)
Underfloor Heating		≤28°C		≤28°C
Fire Classification	DIN 4102-1:1998-05			B1

# INSTALLATION INSTRUCTIONS

PARKAY XPR Timber Installation Instructions/Warranty

## **BEFORE YOU START**

1. Read Parkay Floors installation instructions before beginning.
2. Product cannot be used for exterior applications.
3. PARKAY XPR FLOORING has a patented locking system making it ideal for a floating installation. This product must be glued down when used for light traffic commercial applications.
4. Avoid constant exposure to excessive temperatures or direct sunlight for extended periods of time, since this might cause planks to pick, separate or decolorate. Please consider these exposures when choosing your product. Parkay recommends the use of shades.
5. PARKAY XPR FLOORING does not need to be acclimated if stored and installed in a temperate- controlled environment, maintained between 60°F and 85°F. Additional acclimation must be considered when temperatures mentioned above are not met. Store flat and fully supported during shipping and storage. It is not necessary to remove material from packaging while acclimating. Allow the product to condition in the room where installation is to take place, if not maintained, at a constant temperature between 60°F and 85°F or 18°C – 29°C, for a period of 48 hours prior to installation.
6. Slight variations in color and structure are designed to enhance the natural appearance of the product. Mixing the planks creates a more uniform appearance. Make sure to shuffle planks from different cartons prior to installation.
7. Check PARKAY XPR FLOORING for possible defects prior to the installation. Complaints can only be accepted before installation. Parkay Floors® will not be responsible, or will compensate for any installation, if the floor was installed having an obvious or even a minor visual defect. Double check that the selected color coordinates with your initial sample and that the color name corresponds with the agree order.
8. Unless Parkay XPR is installed by using a Glue down installation method, performing a floating installation on the following facilities may present stress and compromise the locking system:
  - A. Areas where walkers, wheelchairs (i.e.), residential and or with extended care use.
  - B. Facilities with movement of heavy displays, racks, office chairs, dentist chairs, etc.

9. Parkay Flooring strongly recommends the final customer to verify the chosen product, in person, prior to installation, since claims can not be brought up, in regards to color or product name or design after material has been installed.
10. Entryways must always be covered with walk off mats and rolling chairs with chair mats.
11. Moisture content on the subfloor must not exceed 5 lbs./1000ft<sup>2</sup>/24-hr (ASTMF2170), for this product to be installed.
12. Always cover furniture feet/legs with proper materials, such felt pads or similar fabric products.
13. Fixed cabinets or heavy objects cannot be installed when performing a floating installation.
14. Do not install this product over carpet.
15. Underlayment is not necessary for collections carrying an attached padding.
16. Transition moldings are required to separate any area exceeding 2,500 square feet or 50 lineal feet.

## **THE SUBFLOOR**

1. Although PARKAY XPR FLOORING planks are water/moisture proof, they are not to be used as a moisture barrier. Your subfloor should be completely dry prior to installation. Keep in mind that constant moisture coming from the subfloor or topically, will cause mold and mildew to be trapped underneath the product, contributing to an unhealthy environment. Parkay Floors® will not warrant any product based on damages caused by excessive moisture. Subfloors presenting vapor emissions between 2.5% to 5% (CM-Method), must install a 6mil Poly-plastic block before laying the cushioned underlayment. All concrete subfloors must use plastic block for extra moisture protection. Parkay recommends Polyguard PRO 6 as an ideal plastic block for extra moisture protection.
2. Subfloors must be structurally sound, solid, stable, level, plumb, and true to a tolerance in plane of 3/16" in 10 feet (4.7mm in 4m). Cracks, holes, and grout lines must be filled with a fast-drying setting cement-based polymer modified patching compound or equivalent. Any unevenness over 3/16" (4.7mm) must be sanded down, leveled or ramped to a 0°. The surface must be totally clean of dirt, oil, glue residue etc. Carpet tackles, staples or adhesive residue should be removed prior to installation. Voids or humps in the subfloor will prevent the planks from locking properly.
3. PARKAY XPR FLOORING can be installed on existing firm floors (Linoleum, PVC), but all floating or textile floors must be removed. When laying the floor over existing ceramic tiles first level with fast setting cement-based polymer modified patching compound.

4. The professional must also make sure the product ready to be installed, corresponds with the chosen sample and the name on the boxes matches with the agreed order.

This product has an attached IXPE 1mm underlayment. It must be glued down when used for any commercial application, using a pressure sensitive adhesive.

## **MEASUREMENTS**

1. Agree with the client on which direction the floorboards should run since this influences the visual size ratio of the space. Installation parallel to the longest wall or the main light-source is recommended for the best visual effect.
2. Pre-plan the floor by measuring the room first. If the width of the last row is less than 2" (5cm) saw the first and the last plank in equal width.
3. Snap the lines on the substrate to identify the layout reference points. Planks should be set using this reference to ensure boards are aligned and will lock together correctly.
4. In large areas where flooring will span more than 50' long, an expansion gap should be used. Otherwise place expansion space in room-narrowing and in the door-rebate. Cover the expansion space with suitable moldings.

## **Different production runs**

PARKAY XPR FLOORS can have slight color variations in between production runs. Before starting the installation, it is best to check the production run # which is indicated on the label on the carton. If you find that you have cartons from different production runs, it is highly recommended to open cartons and install a mix of planks from each different production run on your floor. This will result in a more natural looking floor. Do NOT install your PARKAY XPR FLOORS over soft subfloors such as carpet, floating floors or foam underlayments, different than the ones recommended by the manufacturer.

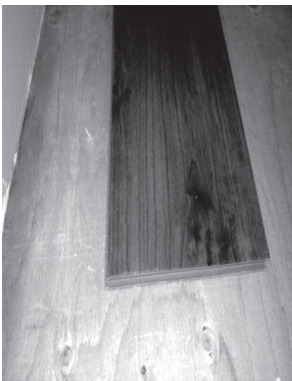
Although the use of pull bar and tapping block is recommended to ensure a successful install, make sure to not brake or damage the edges of the plank, since will compromise the locking system.

PARKAY XPR FLOORS provides a very tight fit. Proper care must be used to ensure all seams are tight at end of install. An unprofessional installation or use of improper tools can result in damage to the Click profiles.

# INSTALLATION INSTRUCTIONS

## First row:

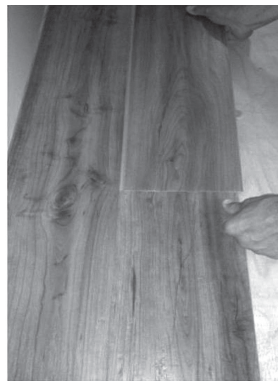
1. Diagram #1: Start with the first plank in the left corner of the room, tongue-side facing out from the wall to the length and to the right on the width. Work from left to right.
2. Diagram #2: Position the following planks as an exact extension of the first one.
3. Cut to fit the last plank of the row. To do this you can use a utility knife to score the surface at the appropriate point and then break the tile over an edge. A laminate cutter or miter saw can be used as well.



1



2



3



4

## Following rows:

1. Diagram #3: Begin the second row with the cut-off end to start the next and subsequent rows. Allow at least an 8" stagger for the end seams. For positioning the planks together, starting with the first tile in the row, raise the plank at a 45-degree angle, insert the lengthways tongue into the lengthways groove and lower the plank while holding the two together until they are flat and tightly together. Close the join using hand pressure, tapping block or pull bar.
2. Diagram #4: Lever the next sheet in place from the front side so that only a very short distance remains for it to be pushed into the lengthways connection.





5



6



7

3. Diagram #5, #6 and #7: Raise the plank slightly and push it into the lengthways tongue, first close to the front connection, then the rest. Make sure seams are tight on ends and sides using pull bar or tapping block before proceeding. Continue the installation to the last row of sheets, as described.

4. How to shorten doorframes: Position a loose plank face down, close to the doorframe, and cut with a jamb saw.

5. People can walk on the flooring immediately after the installation. Remove the wedges. Nail or screw moldings to the wall, never to the floor.

## **INSTALLATION OVER RADIANT HEATED SUBFLOORS**

PARKAY XPR FLOOR Flooring is not recommended to be installed over any electrical radiant heating systems. Only radiant heated system using water are recommended. Max heating temperate must not exceed 85°F. These Instructions must be followed:

Before installing, make sure to test the heating system at its maximum capacity to force out any residual moisture and to make sure it's working properly.

Moisture content on screed must not exceed 1.5%.

Shut down the heating system at least 48 hours prior to installation.

Keep room temperate between 60°F and 85°F during the installation.

After flooring is install, turn on the heating system gradually, from minimum to maximum within 1-hour period.



## **MAINTENANCE**

Clean regularly with a damp mop with a vinyl floor cleaner such as Bona Pro Series Vinyl Cleaner. Do not use excessive water. Remember to clean up spills as soon as possible. Always use chair protectors under furniture and on chair legs. Felt pad protectors are best. Always add floor mats on area where rolling chairs are being used.

## **25 YEARS RESIDENTIAL / 7 YEARS LIGHT**

### **COMMERCIAL WARRANTY**

Our seven years limited light commercial warranty for PARKAY XPR FLOORING means that for seven years, from the date of purchase from the original owner and first installation of the product, your floor will be free from manufacturing defects and will not wear through when installed and maintained according to instructions supplied with each carton. This warranty applies only to the original end user with a proof of purchase, warranty is not transferable. Floors must have been installed by a licensed and insured professional to be able to process any claim. The guarantee is for replacement or refund of the material only, no labor. Claims for wear must show a minimum dime size area. High-heeled shoes, rolling carts, furniture and chairs without protective pads can damage the floor and such areas will not covered by this warranty.

Warranty covers against: Staining, Wear, Fading as a result of natural or artificial light, damage by moisture from everyday household spills and manufacturing defects. Floor will only be replaced for one of the same monetary value.

If more than 5% of the product pulled out of the cartons is showing defects, stop the installation immediately and contact your Parkay representative. Transition moldings are not covered under this warranty. Scratches and loss of gloss are not considered a wear-through issue. Up to 10% gloss variance is considered completely normal between plank

This warranty excludes damage by natural disasters. This warranty excludes floors in contact with moisture trapped beneath the floor. The general warranty is pro rata (25 years for flooring). A pro rata warranty is one that provides for a refund or credit that decreases according to a set formula as the warranty period progresses. A claim process takes up to 90 days to process, from the date Parkay is contacted. We require a detailed description with images of the issue that clearly show the problem. Contact Parkay dealer no later than 15 days after the discovery of the defect. Your dealer will arrange for proper inspection and coordinate a resolution of your claim.

---

**Parkay Floors®** reserves the right to modify the contents of this warranty at any and without previous notice. Please refer to our website to obtain the latest version of our warranty.

For service under this warranty or technical questions, please go to [www.Parkayfloors.com](http://www.Parkayfloors.com) or contact your local retailer.

Describe the problem and in many cases, the retailer can provide you with a solution.

# TESTS & CERTIFICATIONS

# TEST REPORT

No. : XMIN180901954CCM

Date : Oct.30, 2018

Page: 1 of 5

Sample Name : SPC FLOORING + 1MM EVA

Spec : 4.5mm+1mm EVA

Above information and sample(s) was/were submitted and confirmed by the client. SGS, however, assumes no responsibility to verify the accuracy, adequacy and completeness of the sample information provided by client.

\*\*\*\*\*

Test Required : Selected test(s) as requested by applicant

Date of Receipt : Sep.29, 2018

Testing Start Date : Sep.29, 2018

Testing End Date : Oct.30, 2018

Test result(s) : For further details, please refer to the following page(s)  
(Unless otherwise stated the results shown in this test report refer only to the sample(s) tested)

\*\*\*\*\* To be continued\*\*\*\*\*

Signed for  
SGS-CSTC Standards Technical  
Services Co., Ltd Xiamen Branch  
Testing Center



Civi Huang  
Authorized signatory



Unless otherwise agreed in writing, this document is issued by the Company subject to its General Conditions of Service printed overleaf, available on request or accessible at <http://www.sgs.com/en/Terms-and-Conditions.aspx> and, for electronic format documents, subject to Terms and Conditions for Electronic Documents at <http://www.sgs.com/en/Terms-and-Conditions/Terms-e-Document.aspx>. Attention is drawn to the limitation of liability, indemnification and jurisdiction issues defined therein. Any holder of this document is advised that information contained hereon reflects the Company's findings at the time of its intervention only and within the limits of Client's instructions, if any. The Company's sole responsibility is to its Client and this document does not exonerate parties to a transaction from exercising all their rights and obligations under the transaction documents. This document cannot be reproduced except in full, without prior written approval of the Company. Any unauthorized alteration, forgery or falsification of the content or appearance of this document is unlawful and offenders may be prosecuted to the fullest extent of the law. Unless otherwise stated the results shown in this test report refer only to the sample(s) tested and such sample(s) are retained for 30 days only.

Attention: To check the authenticity of testing / inspection report & certificate, please contact us at telephone: (86-755) 8307 1443, or email: [CN.Doccheck@sgs.com](mailto:CN.Doccheck@sgs.com)

SGS-CSTC Standards Technical Services Co., Ltd.  
Xiamen Branch Testing Center Commercial Construction Material Laboratory

No.31 Xianghong Road, Xiang'an Torch Industrial Zone, Xiamen, Fujian Province, China. 361101 t (86-592) 5765857 f (86-592) 5765380 www.sgs.com.cn  
中国·福建·厦门·火炬(翔安)产业区翔虹路31号 邮编: 361101 t (86-592) 5765857 f (86-592) 5765380 e [sgs.china@sgs.com](mailto:sgs.china@sgs.com)

Member of the SGS Group (SGS SA)

# TEST REPORT

No. : XMIN180901954CCM

Date : Oct.30, 2018

Page: 2 of 5

## Test Conducted:

Refer to ASTM E492-09(2016) <sup>1</sup> Standard Test Method for Laboratory Measurement of Impact Sound Transmission Through Floor-Ceiling Assemblies Using the Tapping Machine  
ASTM E989-06(2012) Standard Classification for Determination of Impact Insulation Class (IIC)

## Test Condition:

Sample Description : Flooring (see the photo)  
Total Thickness:5.5mm, surface density: about 9.1kg/m<sup>2</sup>

Project description : No decoration of sample surface, sample installation was assembled directly.  
The test specimen was covered on a 150mm concrete floor with a drop ceiling,  
testing area 11.3m<sup>2</sup>, the drop ceiling construction showed in appendix2  
Drop ceiling: 288mm cavity filled with 50mm glass wool, 12mm gypsum board.

Test method : Two adjacent rooms, one the source room directly above the other the receiving room. A standard tapping machine is placed in operation on the flooring system in source room. The average spectrum of the sound pressure levels produced by the tapping machine is measured in the receiving room.

Test Equipment : RTA840 system

Test Environment : Source room volume 125m<sup>3</sup>, receiving room volume 100m<sup>3</sup>,  
air temperature 20.2 , air humidity 43.1%

## Test Result

Test Item	Test Standard	Result
Determination of Impact Sound Insulation Class	ASTM E492-09(2016) <sup>1</sup> ASTM E989-06(2012)	IIC = 66

\*\*\*\*\* To be continued\*\*\*\*\*



Unless otherwise agreed in writing, this document is issued by the Company subject to its General Conditions of Service printed overleaf, available on request or accessible at <http://www.sgs.com/en/Terms-and-Conditions.aspx> and, for electronic format documents, subject to Terms and Conditions for Electronic Documents at <http://www.sgs.com/en/Terms-and-Conditions/Terms-e-Document.aspx>. Attention is drawn to the limitation of liability, indemnification and jurisdiction issues defined therein. Any holder of this document is advised that information contained hereon reflects the Company's findings at the time of its intervention only and within the limits of Client's instructions, if any. The Company's sole responsibility is to its Client and this document does not exonerate parties to a transaction from exercising all their rights and obligations under the transaction documents. This document cannot be reproduced except in full, without prior written approval of the Company. Any unauthorized alteration, forgery or falsification of the content or appearance of this document is unlawful and offenders may be prosecuted to the fullest extent of the law. Unless otherwise stated the results shown in this test report refer only to the sample(s) tested and such sample(s) are retained for 30 days only.

Attention: To check the authenticity of testing / inspection report & certificate, please contact us at telephone: (86-755) 8307 1443, or email: CN.Doccheck@sgs.com

No.31 Xianghong Road, Xiang'an Torch Industrial Zone, Xiamen, Fujian Province, China. 361101 t (86-592) 5765857 f (86-592) 5765380 www.sgsgroup.com.cn  
中国·福建·厦门·火炬(翔安)产业区翔虹路31号 邮编:361101 t (86-592) 5765857 f (86-592) 5765380 e sgs.china@sgs.com

# TEST REPORT

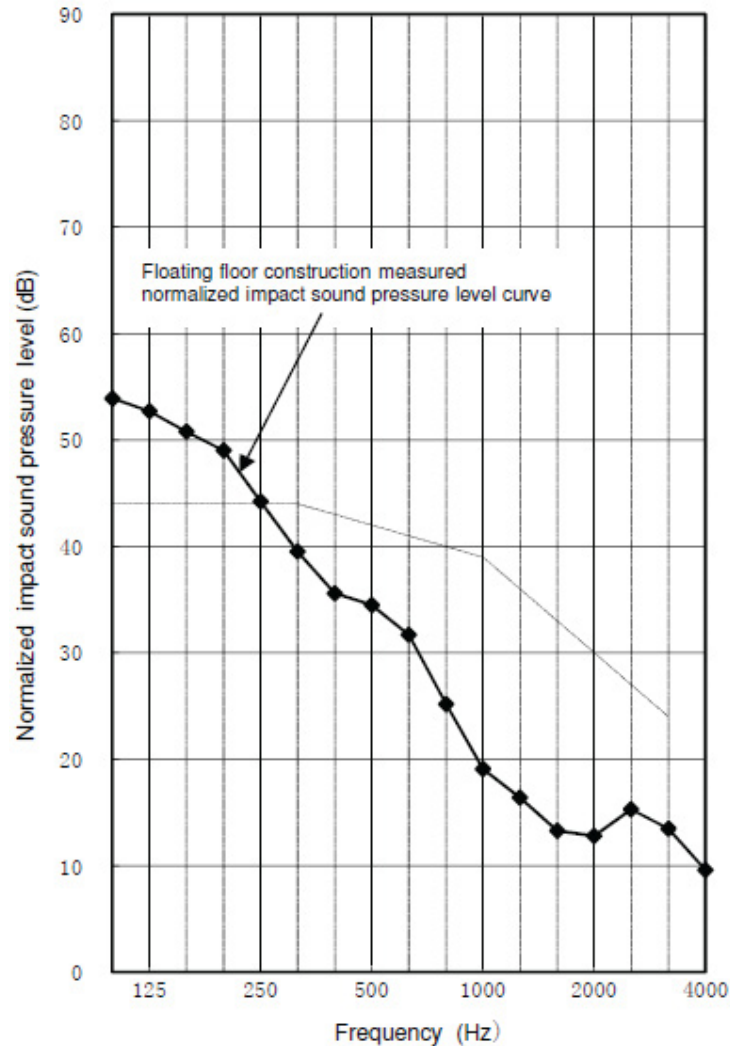
No. : XMIN180901954CCM

Date : Oct.30, 2018

Page: 3 of 5

## Appendix 1:

$f$ Hz	$L_n$ dB
100	53.9
125	52.7
160	50.8
200	49.0
250	44.2
315	39.5
400	35.6
500	34.5
630	31.7
800	25.2
1000	19.1
1250	16.4
1600	13.3
2000	12.8
2500	15.3
3150	13.5
4000	9.6
IIC	66



Remark:  $L_n$  as the weighted normalized impact sound pressure level

\*\*\*\*\* To be continued\*\*\*\*\*



Unless otherwise agreed in writing, this document is issued by the Company subject to its General Conditions of Service printed overleaf, available on request or accessible at <http://www.sgs.com/en/Terms-and-Conditions.aspx> and, for electronic format documents, subject to Terms and Conditions for Electronic Documents at <http://www.sgs.com/en/Terms-and-Conditions/Terms-e-Documents.aspx>. Attention is drawn to the limitation of liability, indemnification and jurisdiction issues defined therein. Any holder of this document is advised that information contained hereon reflects the Company's findings at the time of its intervention only and within the limits of Client's instructions, if any. The Company's sole responsibility is to its Client and this document does not exonerate parties to a transaction from exercising all their rights and obligations under the transaction documents. This document cannot be reproduced except in full, without prior written approval of the Company. Any unauthorized alteration, forgery or falsification of the content or appearance of this document is unlawful and offenders may be prosecuted to the fullest extent of the law. Unless otherwise stated the results shown in this test report refer only to the sample(s) tested and such sample(s) are retained for 30 days only.

Attention: To check the authenticity of testing / inspection report & certificate, please contact us at telephone: (86-755) 8307 1443, or email: CN.Doccheck@sgs.com

No.31 Xianghong Road, Xiang'an Torch Industrial Zone, Xiamen, Fujian Province, China. 361101 t (86-592) 5765857 f (86-592) 5765380 www.sgsgroup.com.cn  
中国·福建·厦门·火炬(翔安)产业区翔虹路31号 邮编:361101 t (86-592) 5765857 f (86-592) 5765380 e sgs.china@sgs.com

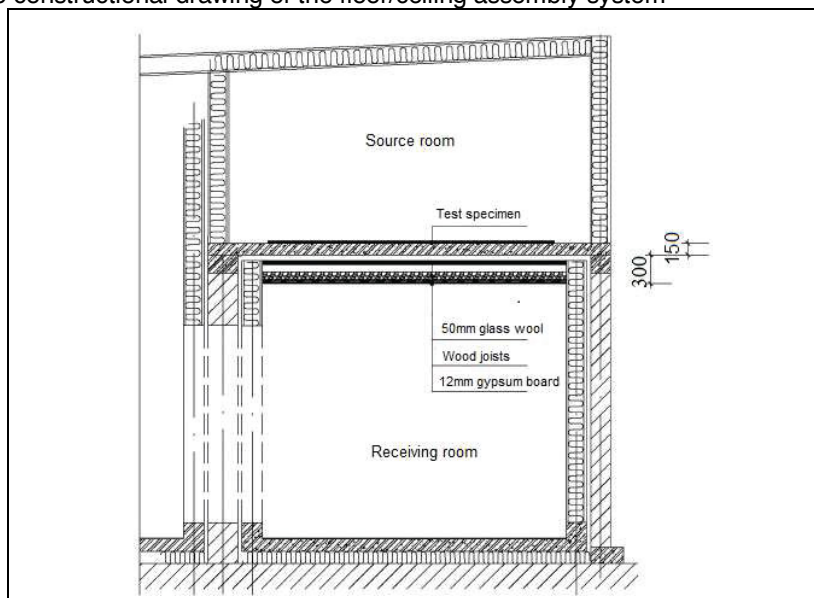
# TEST REPORT

No. : XMIN180901954CCM

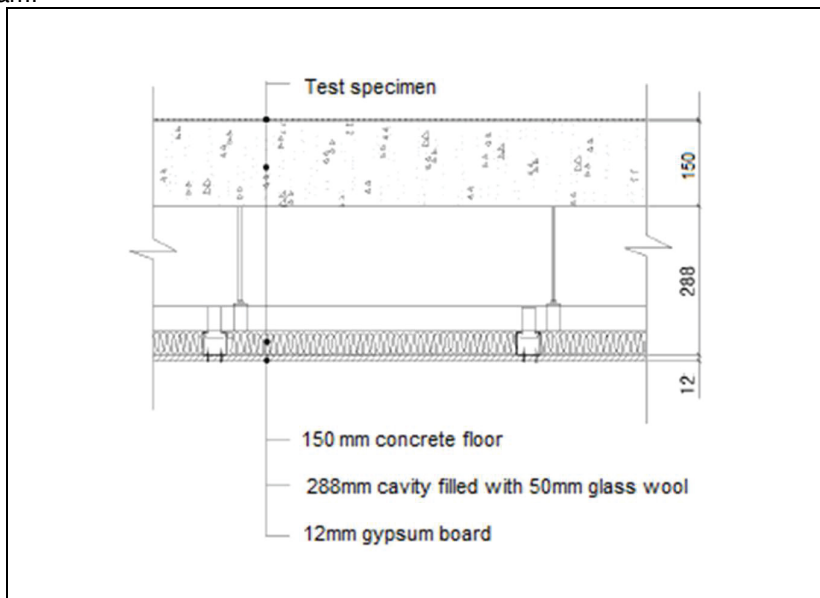
Date : Oct.30, 2018

Page: 4 of 5

## Appendix 2: The constructional drawing of the floor/ceiling assembly system



## Schematic diagram:



Note: The above test was carried out by Center for Building Environment Test, Tsinghua University.

\*\*\*\*\* To be continued\*\*\*\*\*



Unless otherwise agreed in writing, this document is issued by the Company subject to its General Conditions of Service printed overleaf, available on request or accessible at <http://www.sgs.com/en/Terms-and-Conditions.aspx> and, for electronic format documents, subject to Terms and Conditions for Electronic Documents at <http://www.sgs.com/en/Terms-and-Conditions/Terms-e-Documents.aspx>. Attention is drawn to the limitation of liability, indemnification and jurisdiction issues defined therein. Any holder of this document is advised that information contained hereon reflects the Company's findings at the time of its intervention only and within the limits of Client's instructions, if any. The Company's sole responsibility is to its Client and this document does not exonerate parties to a transaction from exercising all their rights and obligations under the transaction documents. This document cannot be reproduced except in full, without prior written approval of the Company. Any unauthorized alteration, forgery or falsification of the content or appearance of this document is unlawful and offenders may be prosecuted to the fullest extent of the law. Unless otherwise stated the results shown in this test report refer only to the sample(s) tested and such sample(s) are retained for 30 days only.

Attention: To check the authenticity of testing / inspection report & certificate, please contact us at telephone: (86-755) 8307 1443, or email: [CN.Doccheck@sgs.com](mailto:CN.Doccheck@sgs.com)

No.31 Xianghong Road, Xiang'an Torch Industrial Zone, Xiamen, Fujian Province, China. 361101 t (86-592) 5765857 f (86-592) 5765380 www.sgsgroup.com.cn  
中国·福建·厦门·火炬(翔安)产业区翔虹路31号 邮编:361101 t (86-592) 5765857 f (86-592) 5765380 e [sgs.china@sgs.com](mailto:sgs.china@sgs.com)



## TEST REPORT

No. : XMIN180901954CCM

Date : Oct.30, 2018

Page: 5 of 5

### Photo Appendix:



SGS authenticate the photo on original report only

\*\*\*\*\*End of report\*\*\*\*\*



SGS-CSTC (Singapore) Technical Services Co., Ltd.  
Xiamen Branch Testing Center Commercial Construction Material Laboratory

Unless otherwise agreed in writing, this document is issued by the Company subject to its General Conditions of Service printed overleaf, available on request or accessible at <http://www.sgs.com/en/Terms-and-Conditions.aspx> and, for electronic format documents, subject to Terms and Conditions for Electronic Documents at <http://www.sgs.com/en/Terms-and-Conditions/Terms-e-Documents.aspx>. Attention is drawn to the limitation of liability, indemnification and jurisdiction issues defined therein. Any holder of this document is advised that information contained hereon reflects the Company's findings at the time of its intervention only and within the limits of Client's instructions, if any. The Company's sole responsibility is to its Client and this document does not exonerate parties to a transaction from exercising all their rights and obligations under the transaction documents. This document cannot be reproduced except in full, without prior written approval of the Company. Any unauthorized alteration, forgery or falsification of the content or appearance of this document is unlawful and offenders may be prosecuted to the fullest extent of the law. Unless otherwise stated the results shown in this test report refer only to the sample(s) tested and such sample(s) are retained for 30 days only.

Attention: To check the authenticity of testing / inspection report & certificate, please contact us at telephone: (86-755) 8307 1443, or email: [CN.Doccheck@sgs.com](mailto:CN.Doccheck@sgs.com)

No.31 Xianghong Road, Xiang'an Torch Industrial Zone, Xiamen, Fujian Province, China. 361101 t (86-592) 5765857 f (86-592) 5765380 www.sgsgroup.com.cn  
中国·福建·厦门·火炬(翔安)产业区翔红路31号 邮编: 361101 t (86-592) 5765857 f (86-592) 5765380 e [sgs.china@sgs.com](mailto:sgs.china@sgs.com)

## Test Report No.: 0244156088a 001

Material list:

Item: SPC FLOORING/1220\*182\*4/0.3mm+1.5mmIXPE

Material No.	Material	Color	Location
M001	Synthetic material	Grey	Refer to photo

### Test method(s)

ISO 16000-3:2011	Indoor air – Part 3: Determination of formaldehyde and other carbonyl compounds in indoor air and test chamber air – Active sampling method
ISO 16000-6:2004	Indoor air – Part 6: Determination of volatile organic compounds in indoor and test chamber air by active sampling on Tenax TA® sorbent, thermal desorption and gas chromatography using MS/FID
ISO 16000-9:2006	Indoor air – Part 9: Determination of the emission of volatile organic compounds from building products and furnishing – Emission test chamber method

### Test chamber conditions

Test chamber:	Corresponding to ISO 16000-9
Test chamber volume:	1 m <sup>3</sup>
Temperature of supply air:	23 °C ± 2 °C
Relative humidity of supply air:	50 % ± 5 %
Exchange of air:	1.25 h <sup>-1</sup> ± 0.1 h <sup>-1</sup>
Loading factor:	0.4 m <sup>2</sup> /m <sup>3</sup>
Loading conditions:	(*For Wooden Flooring:*) From x samples received in to the laboratory, one test specimen has been prepared in order to reconstruct a surface of infinite size scenario. The underside and open edges of the panels have been sealed with aluminium foil. Only the upper surface is exposed to the air of the emission test chamber. The total emitting surface is equal to 0.4 m <sup>2</sup> (*For PVC flooring:*) A test specimen with an emitting surface of 0,4 m <sup>2</sup> has been prepared keeping a ratio between unsealed edges and surface of 1.2 m/m <sup>2</sup> . The backsides of the panels have been sealed with aluminium tape.
Inflow velocity:	0.3 m/s

## Test Report No.: 0244156088a 001

### 1. Labelling of construction and decoration products with their volatile pollutant emissions (VOC and formaldehyde) – final classification

The emission of the substances are classified according to a scale with 4 classes ranging from A+ to C, A+ indicating a very low emission level and C indicating a high level of emission. The emission level is indicated by the exposure concentration in  $\mu\text{g}/\text{m}^3$ . Result of the tested sample after 7 days is shown below in table 1.

Table 1. Result

Parameter	CAS no	Limit values of emission classes ( $\mu\text{g}/\text{m}^3$ )				Concentration After 7 days ( $\mu\text{g}/\text{m}^3$ )	Emission Class
		A+	A	B	C		
Formaldehyde	50-00-0	< 10	< 60	< 120	> 120	n.d.	A+
Acetaldehyde	75-07-0	< 200	< 300	< 400	> 400	n.d.	A+
Toluene	108-88-3	< 300	< 450	< 600	> 600	n.d.	A+
Tetrachlorethylene	127-18-4	< 250	< 350	< 500	> 500	n.d.	A+
Xylene	1330-20-7	< 200	< 300	< 400	> 400	n.d.	A+
1,2,4-Trimethylbenzene	95-63-6	< 1000	< 1500	< 2.000	> 2000	n.d.	A+
1,4-Dichlorbenzene	106-46-7	< 60	< 90	< 120	> 120	n.d.	A+
Ethylbenzene	100-41-4	< 750	< 1000	< 1500	> 1500	n.d.	A+
2-Butoxyethanol	111-76-2	< 1000	< 1500	< 2000	> 2000	n.d.	A+
Styrene	100-42-5	< 250	< 350	< 500	> 500	n.d.	A+
Total VOC (TVOC) (C <sub>6</sub> – C <sub>16</sub> )	--	< 1000	< 1500	< 2000	> 2000	7	A+

## Test Report No.: 0244156088a 001

### 2. Legal requirements relating to the emission of CMR substances

Only the concentrations of the following CMR substances have been qualified:

Parameter	CAS no	Legal limit ( $\mu\text{g}/\text{m}^3$ )	Concentration ( $\mu\text{g}/\text{m}^3$ )
Trichloroethylene	79-01-6	< 1	n.d.
Benzene	71-43-2	< 1	n.d.
Bis phthalate (2-ethylhexyl) (DEHP)	117-81-7	< 1	n.d.
Dibutyl phthalate (DBP)	84-74-2	< 1	n.d.

#### Abbreviation:

VOC = Volatile Organic Compound

TVOC = Total Volatile Organic Compound

n.d. = not detected

CMR = Carcinogenic; Mutagenic; Reprotoxic

$\mu\text{g}/\text{m}^3$  =micrograms per cubic meter

n.d. = not detected (< 1  $\mu\text{g}/\text{m}^3$ )

**Test Report No.: 0244156088a 001**

**Sample Photo(s)**



- END -

